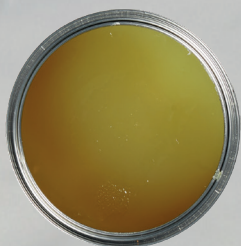


Solido Trasparente

TRANSPARENT SOLID POLYESTER MASTIC

Strong transparent mastic. Reactive even at low temperatures and easily polished, it is ideal for visible bonding, lamination and repairs.



STRONG BONDING



REACTIVE EVEN AT LOW TEMPERATURES



VERY SHINY

Technical data:

- ◆ **Density at 25°C gr/cm³:** 1.1
- ◆ **Standard colour:** transparent
- ◆ **Appearance:** yellowish paste

Approximate consumption:

- ◆ **For grouting:**
20-30 linear meters
- ◆ **For bonding:**
30-40 mt²

The stated duration is only approximate



Indoor



Natural stone



Quartz

How to apply it:

- ◆ Remove the desired quantity of product from the container and weigh it.
- ◆ Comply with the ratio between the product and its hardener as indicated in the TDS.
- ◆ Use clean tools when mixing.
- ◆ If necessary, add liquid or pigment dyes before mixing with the hardener.
- ◆ Make sure that the material on which the product will be applied is clean and dry.
- ◆ To clean tools soiled with mastics, use non-greasy solvents, e.g. Acetone or Butyl Acetate. Use the necessary PPE.
- ◆ Read the technical and safety data sheet carefully.
- ◆ Close the containers with their original caps for correct storage.
- ◆ Avoid prolonged contact with air.

Performance:

Adhesion strength [Mpa]	marble 5.0
Gel time in mass at 25°C	6-9 min
Workability time at 25°C	65-75 min
Extraclear	no
Stability to sunlight	low
Wet effect	good
Spreadability	good
Adhesion on wet	no

Safety measures:

Before use, please read the instructions in the safety data sheet and the notes on the packaging. Close the container after use. For professional use only.

Warnings:

When a surface is treated for the first time, it is advisable to evaluate its effect or adhesion on a sample or hidden corner.



Opening the jar



Spatula product



Addition of hardener



Post mix verticality



Mixed product appearance



Hardened product appearance